



INTELLIGENT CONTROL FOR MODERN GAS EXTINGUISHING SYSTEMS

Fire alarm and extinguishing control panels
for single-zone and multi-zone extinguishing systems

BC600-1L/LTF/EXT
BC600
LC600



RELIABLE AND INDIVIDUAL SOLUTION IN CASE OF EMERGENCY

The ideal solution for complex fire protection requirements – bundling all reports and status information for effective fire extinguishing and alerting.

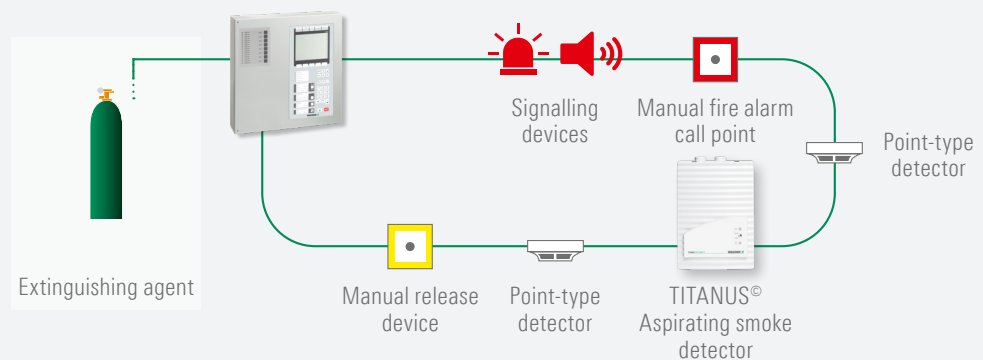
Fires require an immediate reaction. If a fire is detected, immediate alerting is necessary to save lives and protect valuables. A fire detection and fire alarm system is the basis for this.

WAGNER fire alarm and extinguishing control panels are the heart of effective fire extinguishing

Depending on the system configuration, the BC600 series fire

alarm and extinguishing panels are used. With their high-performance processor systems and numerous integrated functions, they ensure maximum efficiency and speed.

Single-zone extinguishing system with BC600-1L/LTF/EXT



Fire alarm and extinguishing control panels BC600-1L/LFT/EXT

The compact, non-expandable BC600-1L/LFT/EXT is a certified, combined fire alarm and extinguishing control panel. It monitors the flooding area via the elements connected to the loop. Detector groups can be logically linked to activate alarm devices and control the extinguishing system.

Fire alarm and extinguishing control panels type BC600 and LC600

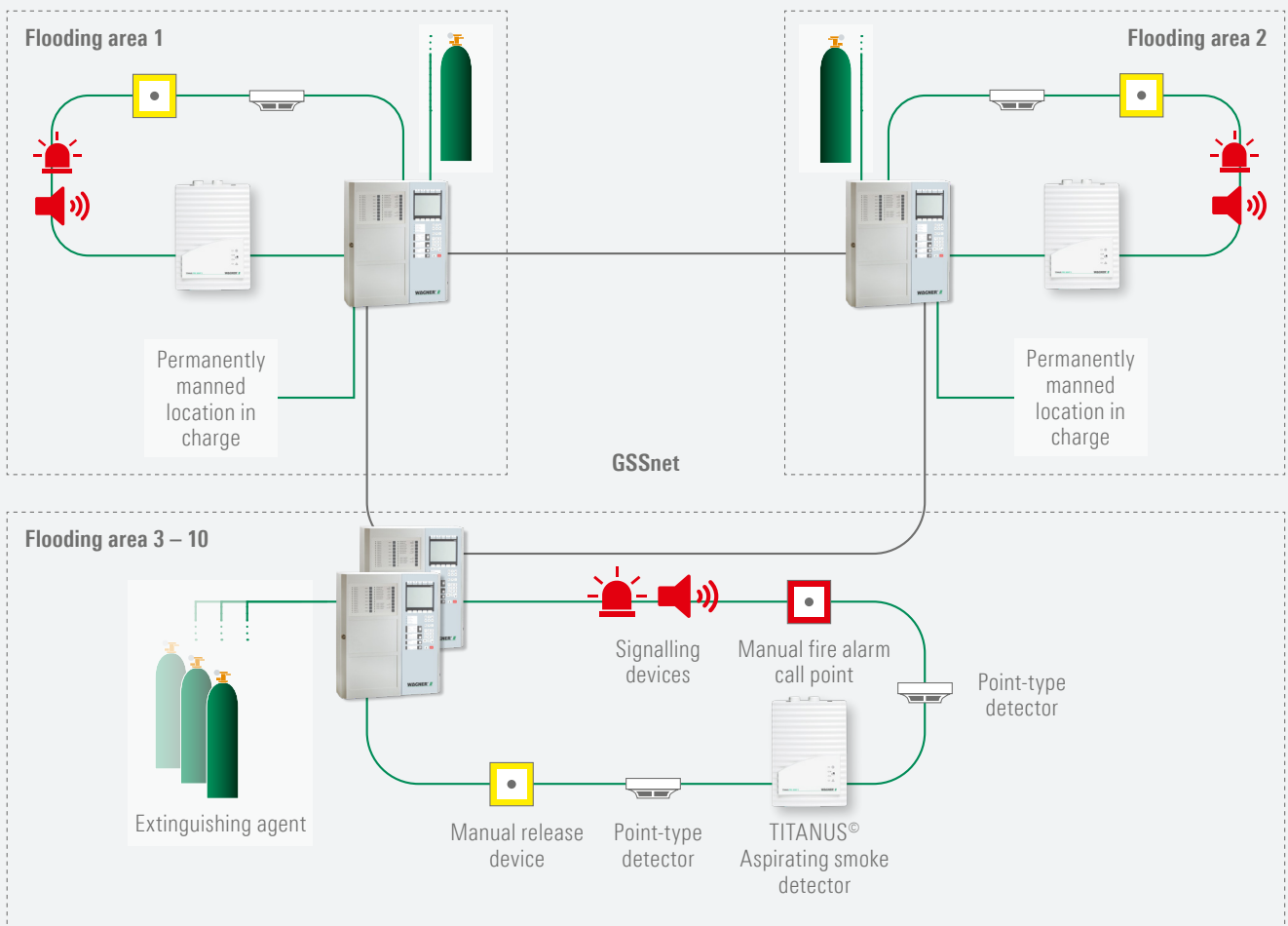
The modular and expandable control panels BC600 and LC600 can be installed centrally and/or decentrally in a networked design. They are suitable as single- and multi-zone extinguishing control panels for up to 2,048 flooding areas. Extinguishing control panels are designed redundant for multi-zone extinguishing systems.

Functions (selection):

- Control of valves and alarm devices
- Different authorization levels
- Individually configurable pre-warning time for triggering delay
- Monitoring of the extinguishing agent flow
- Monitoring of the extinguishing system components
- Switching to manual mode
- Signals for fire control outside the extinguishing system (e.g. shutdown of the air conditioning system)
- Activation of alarm devices with different alarm signals
- Initiation of secondary flooding
- Triggering signals to reserve battery

Single-zone and multi-zone extinguishing systems with BC600 and LC600

Max. number of flooding areas 2,048






Fire alarm and extinguishing control panels



Compact fire alarm and extinguishing control panel

Extinguishing control panel or combined fire alarm and extinguishing control panel

Type designation	BC600-1L/LTF/EXT	LC600/BC600
Technical data		
Wall-mounted housing dimensions (W x H x D)	384 x 384 x 107 mm	444 x 530 x 121 mm (Figure 1) 444 x 530 x 201 mm (not shown) 480 x 670 x 201 mm (Figure 2) Or 19" wall-mounted/floor-standing cabinet (not shown)
Material	Steel panel	Steel panel
Weight (excluding batteries)	approx. 6.0 kg	from approx. 8.0 kg
Color	grey-white, RAL 9002	grey-white, RAL 9002
Functions		
Application area	Single-zone extinguishing system	Single-zone or multi-zone extinguishing systems
Basic equipment incl.	<ul style="list-style-type: none"> ■ 1 loop module ■ 1 integrated extinguishing module ■ Event log for 10,000 events 	<ul style="list-style-type: none"> ■ Up to 127 FACP's 2,540 loops 20,000 detector groups 9,700 control units 99 transmission devices ■ Event log for 10,000 events per FACP
Technology for detector connection	<ul style="list-style-type: none"> ■ Apollo protocol XP95/Discovery/Soteria – up to 126 address points ■ LST protocol FI 700/FI 750 – up to 240 address points ■ System Sensor protocol 200 AP – up to 318 address points ■ Conventional line ORBIS, FC 650, S300/ECO1000 	
Alarm counter	Yes	Yes
System structure	Centralized	Centralized, decentralized, combined
Number of flooding areas	1	1 to 2,048
Number of flooding areas per FACP	1	1 to 128
Operating specifications		
Ambient temperature	-5 °C to +50 °C	-5 °C to +50 °C
Stand-by duration (operating time)	up to 72 hours	up to 72 hours
Approvals/Guidelines		
  	EN 54-2, EN 54-4, EN 12094-1	EN 54-2, EN 54-4, EN 12094-1
	CE 0786-CPD-21612	CE 0786-CPD-21609, CE 0786-CPD-21611
	VdS G218062	VdS G218063 as a pure extinguishing control panel VdS G212164 as a combined fire alarm and extinguishing control panel